



2026
SPRING

Grasslandcorp.com | Latham: (518) 785-5841 | Liverpool: (315) 457-0181

GRASSLAND EQUIPMENT & IRRIGATION EARNS **TORO'S** HIGHEST HONOR



TORO 2025 DISTRIBUTOR OF EXCELLENCE

Grassland Equipment and Irrigation Corp were awarded the Distributor of Excellence award at the recent GCSA Golf Industry Show in Orlando, Florida. "I am humbled and so grateful we earned this award," says President Chris Pogge. "This award is a reflection of our team's dedication to doing their very best for the customer year in and year out."

The Toro Company Partners in Excellence Awards recognize the highest performers amongst its distributors, which includes approximately 50 domestic and 100 foreign distributors in more than 90 countries.

Partners in Excellence Awards were first introduced in 1984 and consist of three possible awards with Distributor of Excellence being Toro's top honor a Distributor can achieve. Its criteria are focused on outstanding achievements in performance, customer care, and customer satisfaction. This designation is given to the distributor who achieves the highest cumulative ranking in four pillars scored as part of the Toro Partners in Excellence program.

Grassland, a full line Toro Distributor Since 1961, celebrates 65 years of serving the Turf Industry this year. A very special thank you to our customers and our commercial sales, consumer sales, irrigation sales and service team, parts department, service department, and office staff. Without you this would not be possible.

Jeff Joedicke receives Irrigation Honor

In addition, Jeff Joedicke received the Blue Blazer award for his efforts in golf irrigation sales. This honor is given to an individual who has provided sales and support excellence that brings value to their customers. A recipient is active in industry organizations and a leader in their market. Congratulations Jeff, well deserved, thank you for all you do for our irrigation customers.



Irrigation Project News

Over the past 12 months, our team has supported two significant full irrigation system installations at Town of Colonie Golf Course and Richwood Golf Club. Both projects represent major investments in long-term playability, infrastructure reliability, and water management efficiency.

Each system features Toro Lynx Smart Module control technology, Toro Infinity sprinklers, and HDPE piping infrastructure, delivering precision water application, simplified maintenance, and durable underground performance.

Town of Colonie Golf Course

The Town of Colonie irrigation installation is part of a broader golf course renovation led by golf course architect Stephen Kay, with irrigation consulting provided by Paul Granger. The multi-year golf course renovation and irrigation system replacement is being installed by George E. Ley Company and is scheduled for completion in 2026. On-site leadership is provided by Superintendent Dave Gallagher.

The project includes:

- Full system replacement
- HDPE mainline and lateral piping
- Toro Lynx Smart Module field control
- Toro Infinity sprinkler platform

Once complete, the new system will support the overall renovation goals while improving efficiency, reliability, and turf performance for this busy municipal facility.



Richwood Golf Club

At Richwood Golf Club, contractor Tanto Irrigation completed a full system installation in approximately 12 weeks. With the course closed for renovations, two installation crews were dedicated to meeting the accelerated summer timeline.

The project was completed in collaboration with owner Rich Schermerhorn, General Manager Shane Harper, Superintendent Travis Morris, Assistant Superintendent Pat Turley, and course consultant Chris Frielinghaus, retired longtime Superintendent at Glens Falls Country Club.

Like Town of Colonie, the system utilizes Toro Lynx Smart Modules, Toro Infinity sprinklers, and HDPE piping to provide long-term performance and serviceability.

These projects highlight the strength of collaboration between owners, architects, consultants, contractors, and supply partners in delivering modern irrigation systems built to perform for decades.



For more information or inquiries, please contact Jeff Joedicke at jjoedicke@grasslandcorp.com.



ECHO/ECHO Robotics now on Sourcewell

Sourcewell contract 112624-ECHO gives access to the following goods and services:

- Autonomous turf mowers and range pickers
- Gas or battery-powered units
- String trimmers and edgers
- Backpack and handheld blowers
- Brushcutters
- Rear-handle chainsaws
- Top-handle chain saws
- Power Pruner® pole saws
- Hedge trimmers
- Attachment capable powerheads
- PAS attachments
- Sprayers and spreaders



For detailed information on Echo's Sourcewell agreement go to...
www.sourcewell-mn.gov/cooperative-purchasing/112624-ECHO

Toro/Ventrac is now on Vermont State Contract

State of Vermont Addendum # 49990/CTR004417
 NASPO Master Agreement #RFP61514



This contract includes Commercial Mowers, Utility Vehicles, Golf Equipment, Turf Equipment, and Handheld Equipment.

For more information or inquiries, please contact Jim Gernander at jgernander@grasslandcorp.com

Toro/Ventrac New York State Contract

Heavy Duty Equipment

July 7, 2022 to April 30, 2026

The Toro Company has been awarded
 Contract # PC69682
 Group: 40625, Award: PGB-22792



This LOT includes all Mowing Equipment, Golf & Commercial Irrigation Products , Aeration Equipment, Sprayers, Zero Turn Mowers, Siteworks Systems Dingo, Trenchers, Turf Renovation Equipment, Contractor Equipment, Tree Care Products, Work Vehicles, Snow Equipment and accessories and options listed in Toro's Current Price List. This LOT also includes all Ventrac Tractors, SSV, and attachments. **NEW NY State Contract now includes Toro Autonomous Solutions.**

Visit OGS for more information or contact your Grassland Representative.



Sourcewell Cooperative Purchasing Contract

Please Note that Tax Supported Organizations (State & Federal Agencies excluded) may be able to purchase Toro Products not currently on NYS Contract by utilizing the Sourcewell Cooperative Purchasing program. Sourcewell works with public and non-profit agencies, who competitively solicit and award national contracts for aggregated use.

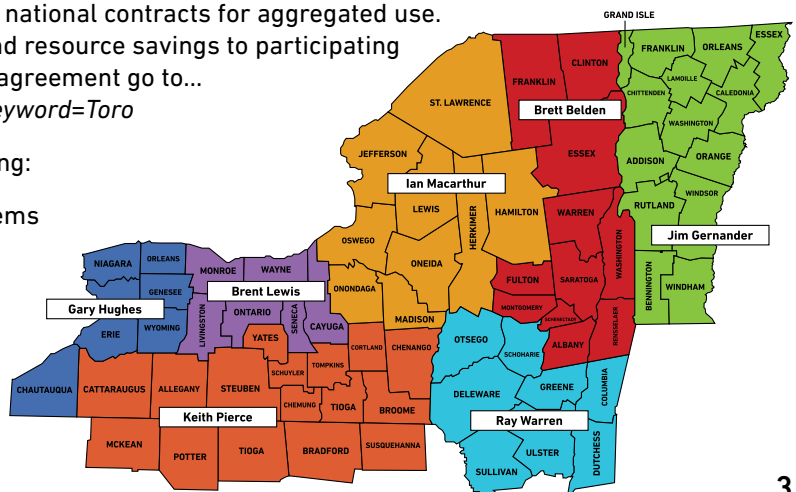
This cooperative strategy offers lower costs plus time and resource savings to participating agencies. For detailed information on Toro's Sourcewell agreement go to...

www.sourcewell-mn.gov/contract-search?category=All&keyword=Toro

Sourcewell Cooperative Purchasing is dedicated to serving:

- Public and Private Educational Institutions and Systems
- County Government
- City/Local Government
- Special Districts
- Government-Education Health Care Entities
- Nonprofits

This is an optional use program with
 NO FEE TO PARTICIPATE in the program.



GRASSLAND NEWS

Kevin Komer, CGCS, earns Excellence in Government Affairs Award from GCSAA

Kevin Komer, CGCS, director of agronomy at The Mountain Course at Spruce Peak and Stowe Country Club, has earned the 2026 Excellence in Government Affairs Award from the Golf Course Superintendents Association of America (GCSAA) for his distinguished legacy of state advocacy work in Vermont.

The Excellence in Government Affairs Award recognizes a chapter, superintendent or coalition for outstanding advocacy or compliance efforts in government affairs. Komer, a 34-year GCSAA member, was honored at the 2026 GCSAA Conference and Trade Show in Orlando.

On numerous occasions, Komer has provided excellent testimony representing pesticide applicators in the golf industry, specifically on the importance of insecticides, which had come under criticism by some in the state in recent years. In 2024, Vermont house bill 706 sought to ban the use of neonicotinoid products from use in the state, and although it passed, thanks in part to the case made by Komer emphasizing use of best management practices, turf applications were allowed to continue. Neonics have proven to be a safe and effective tool for the control of white grubs and other turf damaging insects.

“When it comes to advocacy and communicating with legislators, you either have a seat at the table or you are on the menu. We must show up at the table – someone must do it, and there’s no reason it can’t be you,” said Kevin Komer, CGCS. “Superintendents must speak up when restrictive legislation is introduced. Putting a face with an industry is so important to foster and create relationships in government.”

Komer has made environmental stewardship a top priority at his club, demonstrating his commitment to protecting the essential resources that sustain Vermont’s golf industry. He emphasizes advocacy and science-based decision-making to create exceptional course conditions while prioritizing environmental protection. Komer maintains acres of pollinator friendly land within the courses he oversees.

“I am honored to be recognized by my peers for my advocacy efforts over the past decade. I strongly believe that golf course superintendents are stewards of the environment and are high-quality land managers,” Komer said. “It is because of my strong belief that being a golf course superintendent is a noble profession that I have been motivated to fight the good fight for the golf industry in the state of Vermont and to protect our industry from regulation that would restrict our abilities to succeed.”

Komer has served as a GCSAA Grassroots Ambassador since January 2015. He is a member and past president of the Vermont Golf Course Superintendents Association. Komer also served on the New England BMPs Steering Committee to develop the state’s BMP guidelines.



THANK YOU CUSTOMERS!



SCHENECTADY MUNICIPAL GC

A new Toro MDX Lithium for Schenectady Muni GC. Thank you Jeff and Antonio.



ALBANY CITY SCHOOLS

Albany City Schools is going deep, 10” deep to be exact, with their new Toro ProCore SR54-S. Thanks Brett Mackay!



ALBANY COUNTRY CLUB

Albany Country Club upgraded their utility cart fleet with a new Toro Workman MDX. Thanks Derek and Eric!

Toro Unveils New Equipment at GCSAA Trade Show 2026

GreensPro e1700 Greens Roller **ELECTRIC TECHNOLOGY**

The new GreensPro e1700 is an all-electric greens roller that delivers cutting-edge design, dependable performance, and effortless operation. Its integrated trailer with SmartHitch™, intuitive joystick control, and built-in pass alignment feature help your crew achieve uniform, repeatable results with greater operator efficiency and productivity. With its expandable Hypercell® Lithium Battery pack, your crew can tackle even the most demanding layouts with confidence—finishing the job on a single charge. And because its fully electric design eliminates hydraulics, reduces noise and fumes, and requires less maintenance, the GreensPro e1700 brings intuitive power and reliable day-to-day operation together in one streamlined solution.



Features:

- Direct drive on all three drums enhances traction and radius dependent drum speed eliminates roller scuffing and slipping, ensuring a perfect roll on the most challenging contours.
- Automated Features – Precision Pass Alignment lets operators prep for the next pass with a single button press, while the Roller Clean feature simplifies built up debris removal with easy access after rolling.
- Joystick Control – The intuitive Point and Go joystick enhances ease of operation, allowing new operators to swiftly master steering and rolling speed controls with minimal effort.
- SmartHitch™ Integrated Trailer – The GreensPro 1700's built-in transport wheels replace separate trailers or pull-over drawbars. Simply drive up, connect, and lift the machine off the ground with the push of a button.
- All Electric – Toro HyperCell® battery technology and 100% electric control reduces noise levels, minimizes maintenance, and eliminates concerns with oil leaks on the green.
- Expandable Range – The base configuration comes with two Toro HyperCell Batteries. For customers needing extra range, the unit can be upgraded to accommodate up to four batteries.

Workman LTX **ELECTRIC TECHNOLOGY**

The next generation of light-duty utility vehicles is here. The new Workman LTX delivers everything you asked for - power, comfort, and elevated design. Powered by either the Briggs & Stratton Vanguard 400 EFI gas engine or the Toro HyperCell lithium battery system, the LTX offers standard height, lifted, or extended models to help you tackle your toughest days. With abundant storage, enhanced options, optimal design, and rugged reliability, you don't have to choose between strength and versatility.



- Power Your Way – Select the Briggs & Stratton® Vanguard® 400 EFI gasoline engine or the advanced Toro HyperCell® Lithium-Ion battery system. Both deliver exceptional power, reliability, and efficiency, to tackle every job with confidence.
- Customize – The Workman LTX gives you the flexibility to tackle any job with dozens of configuration options. Choose standard height or lifted models, extended the bed for additional hauling, or add an additional row of seats.
- Intuitive Dashboard Layout – Oversized cup holders and ample storage for tools and gear. Stay in control with easy-to-reach controls and a clear LCD display. Plus, keep your devices powered with integrated USB-A & C charging ports.
- Braking You Can Count On – Hydraulic disc brakes deliver reliable, consistent stopping power with minimal maintenance, no cable adjustments and less pedal force than traditional mechanical brakes. On lithium-powered models, an electronically controlled parking brake adds an extra layer of convenience.
- Suspension – Equipped with coil-over shocks on all four tires, the system provides enhanced suspension travel and adjustability. This results in a smoother, more controlled ride while reducing operator fatigue.
- Steering – An automotive-grade rack and pinion steering system provides more control and lowers steering effort, while operating loaded or empty. This allows operators to focus on the task at hand and nothing else.

For more information or a quote please contact your Commercial Salesman.

AUTONOMOUS TECHNOLOGY



Toro Turf Pro & Range Pro

Toro introduced the Turf Pro™ 500/300 and Range Pro™ 100 last year. These innovative products are designed to optimize golf course maintenance by providing high-quality performance, consistent results, and significant labor and cost savings.

Turf Pro 500/300: Cutting-Edge Technology for Effortless Mowing

The Turf Pro is a state-of-the-art autonomous mower that can mow up to 18.5 acres with precision and efficiency. Designed with cutting performance at its core, the Turf Pro leverages advanced technology to achieve consistently clean, well-maintained turf with minimal input from operators. With GPS RTK technology, the Turf Pro navigates with a 0.75– 1.25” level precision, enabling it to mow a consistent pattern with a minimal overlap. Its quiet operation ensures little disruption to golfers, while its repeatable results provide superintendents with reliable performance.



The Turf Pro is ideal for freeing up labor to focus on other areas of the course, where specialized skills are needed. The mower’s proficient capabilities ensure that every inch of turf is cared for without sacrificing quality.

Range Pro 100: Streamlining Ball Collection on the Driving Range

The Range Pro is an autonomous golf ball picking robot designed to streamline the labor-intensive task of collecting golf balls from the driving range. Capable of collecting over 15,000 balls in 24 hours, the Range Pro is a game-changer for golf courses looking to save time and labor while maintaining a clean, tidy range for golfers. Its efficient design minimizes the need for manual labor, enabling course staff to focus on other critical tasks throughout the day.



Both the Turf Pro and Range Pro feature wireless monitoring and control capabilities, allowing superintendents to easily track and adjust their performance via computer or mobile device.

NEW TORO TURFPRO CONNECT APP INFO

Both the Turf Pro and Range Pro feature wireless monitoring and control capabilities, allowing superintendents to easily track and adjust their performance via computer or mobile device.

The new TurfPro Connect app features new improvements that make setup easier and gives the user more control. New features include adding a step cut (or contour cut), GPS paths no longer need a safety zone, navigation improvements, parcel daily mow limits, border mode for no-go zones, and more!

If you would like to learn more or are interested in a demo on your property please contact your commercial salesman or Cody Schuster at cschuster@grasslandcorp.com.



AUTONOMOUS TECHNOLOGY



Introducing the GeoLink® Solutions™ Autonomous Fairway Mower

Backed by over a century of golf expertise, Toro's GeoLink® Solutions™ Autonomous Fairway Mower combines the trusted excellence of the TriFlex platform with advanced GeoLink autonomous technology to help golf courses do more with less. Equipped with GeoLink Mow technology, which allows for manual or autonomous operation, a user can supervise one or more units while performing other work on the golf course.

Using the corresponding app on a smartphone, tablet, or desktop, users can map the property, assign mowing patterns, view diagnostics, and track progress. Real-time text alerts notify the user of faults or required actions, ensuring operators stay informed. Toro's fairway cutting units are engineered for exceptional results. Featuring precise 5" DBA reels with an adjustable height of cut range from 0.25" to 0.75", they deliver smooth, consistent quality on every pass. The quick-change reel system adds flexibility, allowing users to easily switch from fairway mowing to manual mowing of greens, tees, or approaches.



Win the battle to do more with less.

Accelerate your crew's productivity and efficiency. One supervisor can operate multiple mowers while on the property, so you can free up labor to tackle other high-value tasks. Imagine what you can do with the flexibility to allocate your team where they're needed most.

Keep the art in greenkeeping.

You're in control. Set custom striping patterns and more — our GeoLink Mow technology will execute it flawlessly with Toro's industry-leading reel cutting units for a superior quality of cut. Plus, the inside wheel and reels automatically slow down in turns to eliminate turf wear and scrubbing. When the machine stops, it will lift the reels and loop back to pick up where it left off on restart.

Deliver precision on repeat.

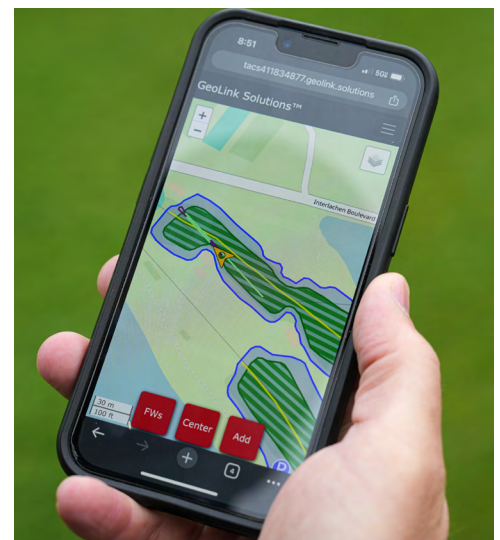
When your mower drives straighter lines than any operator can, it's easy to get consistently beautiful results. And managing the cleanup pass is a snap. Once you've set the map, the mower follows it with repeatable accuracy — randomizing turnaround paths to minimize wear on the turf.

We saved you a seat.

You have more options to maximize your investment. When this mower isn't in use on the fairway, it can be operated in standard mode to supplement your fleet. Plus, you can easily swap reels to mow tees or greens.

Minimize interruptions with smart transport.

Depending on your property, this machine can move from one fairway to the next based on your mapping input — so you don't have to take time away from other tasks for transport. Our GeoLink technology follows your programmed map boundaries and obstacles, providing updates by text or through the mobile app.

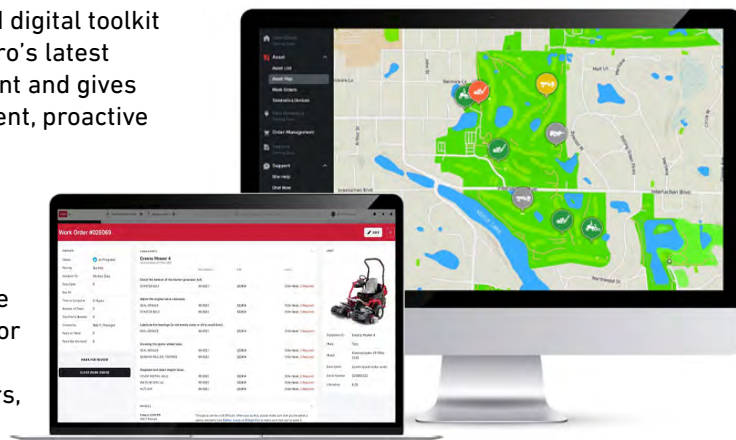


For more information or to schedule a demo please contact your Commercial Salesman.

Toro Expands Intelli360® Digit Fleet Management Software

Toro released the all new Intelli360™ last year, a web-based digital toolkit available for golf course managers and superintendents. Toro's latest innovation simplifies golf course turf equipment management and gives superintendents the real-time data they need to make efficient, proactive decisions.

Intelli360 creates a truly optimized fleet management experience. From any web-enabled device, superintendents can seamlessly manage equipment fleets no matter where they are located on the facility property. Using the interactive map, they can easily locate connected equipment and monitor operating status, hours and upcoming maintenance needs. From the Intelli360 home page, users can create work orders, schedule labor and set due dates in one central hub.



For 2026, Toro is excited to announce a significant expansion of the Intelli360® digital toolbox with the addition of streamlined parts ordering functionality. Officially available in early February 2026, the expansion further positions Intelli360 as a comprehensive central hub for superintendents and equipment managers to oversee their entire equipment operation from a single source.

The new parts ordering functionality provides a more modern and intuitive user experience. Parts ordering within Intelli360 uses a new single-cart model that allows users to seamlessly add genuine Toro parts and non-OEM parts to a single order. Designed to simplify parts ordering, an integrated shopping list feature allows for rapid re-ordering of common items like filters and blades. Staff can also build "shopping lists" of needed components for supervisor review and approval before an order is finalized. Technicians can identify a maintenance need, add repair parts to a shopping list and managers can complete the parts order in just a few clicks.

As part of the Intelli360 roadmap, Toro plans to introduce integrated parts inventory management, which will allow for automated alerts when stock drops below user-defined thresholds. Additionally, future updates include fault code notifications that will provide initial steps needed to diagnose and address the fault.

Parts ordering is available with all subscription levels. Also, current myTurf® users can access their fleet within Intelli360 using their myTurf credentials.

If you are interested or want to learn more please contact your Commercial Salesman.

THANK YOU CUSTOMERS!



NYS PARKS DEPT-SARATOGA

NYS Parks Dept added to their fleet w/ a Toro Workman HDX 4WD. Thanks Brian!



TOWN OF COLONIE GOLF COURSE

The Town of Colonie GC got a new Toro Greensmaster 3300 and MultiPro5800 sprayer. Thanks David!



BLUFF POINT GOLF RESORT

Bluff Point Golf Resort took delivery of their new Toro ProCore 648S. Thanks Paul, Dave, and Terry!



EAGLE CREST GOLF CLUB

A new Toro Greensmaster for Todd at Eagle Crest Golf Club. Thank you!



SCHENECTADY MUNICIPAL GC

Jeff and Antonio at Schenectady Muni GC received their new Greensmaster 3300. Thanks guys!



CITY OF ALBANY-CAPITAL HILLS GC

The City of Albany-Capital Hills GC took delivery of a Toro Reelmaster 5510 to keep their fairway mowers up to date. Thanks Matt!



CITY OF ALBANY

The City of Albany continues adding to their fleet of mowers/sidewalk machines with another Toro GM7210.



CITY OF ALBANY REC DEPT

The City of Albany Rec Dept took delivery of a new Toro Groundsmaster 3500 to keep their ball fields in tip top shape. Thanks Jessica and Mike.



GLENS FALLS COUNTRY CLUB

A nice pair of rough mowers for Glens Falls CC, the Toro Groundsmaster 3500 and 4500 are an unstoppable combo. Thanks Noah and Zach.



BALLSTON SPA SCHOOLS

Out with the 2007, in with the 2025 Toro Groundsmaster 4500. Thanks Justin!



NYSOGS HARRIMAN

NYSOGS Harriman campus took delivery of three new Toro Groundsmaster 4000s. Thanks Mike and Jim!



NYS CANAL SYSTEM

The NYS Canal System added four more Toro Z Masters to their fleet. Thanks Darren and Bobbyjo!

Toro Unveils New Equipment for Landscape Contractors at Equip Expo 2025

GrandStand MULTI FORCE EVO

Models: 72525, 72531

When customers speak, Toro listens. The latest MULTI FORCE EVO gets a powerful boost in strength thanks to the fierce Kawasaki EVO 34.5 HP engine. Plus, the included service stand attachment makes maintenance fast and easy, giving you more time on the job.

The MULTI FORCE EVO includes the same rugged TURBO FORCE® cutting deck and seasonal versatility that operators have come to love. With a wide variety of attachments available, the machine helps landscape contractors maximize efficiency and revenue opportunities year-round, no matter the season.



PROLINE AMI

AUTONOMOUS TECHNOLOGY

Models: 44460BOT

When the to-do list feels like too much to tackle, the autonomous PROLINE AMI acts as extra crew. Toro's latest autonomous mower is guided by GNSS+RTK, a high-precision positioning technology that combines satellite navigation with real-time corrections for consistent results with less overlap.

Contractors can operate confidently with continuous system monitoring, including audio and visual alerts, remote stop, and ISO-compliant radar to aid in collision avoidance. Monitor machine status and access controls on the bright, full-color LED screen or through the mobile app.

The new technology is built on the trusted PROLINE platform, which runs on the 26.5 HP Kohler® Command PRO EFI engine for the extra muscle needed to tear through demanding conditions.

"The combination of intelligence, power and convenience in the autonomous PROLINE AMI will be a huge boost for crews who never have enough time in the day," Gray says. "The ability to complete multiple tasks at once will help save time, improve efficiency and bring in extra revenue.



TurfMaster® HDX w/ Casters

Models: 22236

The TurfMaster® HDX 30" with casters delivers the legendary power, durability, and cut quality pros demand—now with even greater maneuverability. Its rugged 30" deck and Kohler CV224 Command Pro engine power through tough conditions, while the caster front end navigates tight spaces with ease and locks in for precision on open terrain. Built for all-day productivity, it features a two-point height of cut system for quick adjustments, a blade brake clutch for fast stops and restarts, and a large one-gallon gas tank for fewer refuels. The split deck belt cover streamlines maintenance, providing quick access for cleaning and servicing to keep the mower running at peak efficiency. As the lightest 30" caster commercial-grade mower, it's tough, agile, and ready to tackle any job.

For more information or a quote please contact your Commercial Salesman.



ELECTRIC TECHNOLOGY



Toro Introduces the All New Groundsmaster e3300

Toro is excited to showcase the new Groundsmaster e3300 at the 2025. This battery-powered option of the popular out-front rotary mower, features the same rugged chassis, commercial-grade mowing deck and intuitive operator controls as the current diesel-powered platform.

“For over 50 years, Toro has produced innovative rotary mowers that deliver exceptional results that our customers can count on,” says Jay Thaker, product manager at Toro. “As the industry leader, not only are we expected to, we are excited to build on that expectation with the Groundsmaster e3300, the latest electric option in a legacy product line.”



The Groundsmaster e3300 is powered by HyperCell batteries — Toro’s proprietary, patent-pending lithium-ion technology. Toro has implemented rigorous standards that require every battery to pass extensive environmental and third-party certification testing. The distributed Battery Management System (BMS) optimizes battery performance to enhance productivity and longevity. Because the BMS is integrated, HyperCell batteries communicate with each other to optimize efficiency and extend the lifecycle, well beyond the 5,000-hour design life of the traction unit. HyperCell batteries provide diagnostic information to simplify and streamline any service needs. A third-party recycling program is available for batteries that reach end-of-life.

The Groundsmaster e3300 can be configured with up to 17 HyperCell batteries for extended runtime in the most demanding conditions. Smart Power® mode optimizes power consumption by continuously and efficiently providing ample cutting power without bogging the machine down. Additionally, a battery reserve setting ensures plenty of power to return the mower to the recharging station. Equipped with an EVSE (Electric Vehicle Supply Equipment)-ready 3.3 kW on-board charger, operators can simply plug in the Groundsmaster e3300 overnight so it’s ready for operation the next day.

The Groundsmaster e3300 comes standard with Toro’s InfoCenter™ display with battery charge status, hours, alerts, customizable settings and more. It also features the same impact bumpers and rugged 60” high-strength steel side or rear discharge mowing deck options as the popular diesel-powered Groundsmaster models.

The newly electrified Toro favorite offers battery-powered, go-all-day productivity with the legendary Groundsmaster reliability grounds crews know and appreciate. The Groundsmaster e3300 is a perfect addition to any mowing fleet or turf maintenance operation.



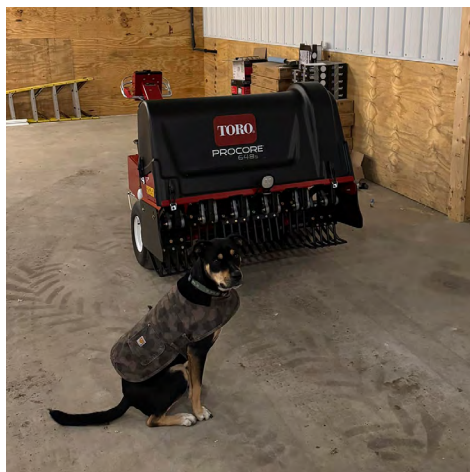
For more information or a quote please contact your Commercial Salesman.

THANK YOU CUSTOMERS!



SCHROON LAKE RV PARK

Schroon Lake RV Park just made their fall/spring clean up a lot easier with a new Harper TV40. Thanks Todd!



SCHENECTADY MUNICIPAL GC

Khloe took delivery of a new Toro ProCore 648s at Schenectady Muni GC. Thanks Jeff and Tony!



TOWN OF HALFMOON PARKS DEPT

Town of Halfmoon Parks Dept got their new Toro Grandstand MultiForce with a turbine blower and plow. Thanks Matt!



SCHALMONT SCHOOLS

Schalmont Schools got their new Toro Z Master 6000, bagger and tweels too! Thanks John and Tony!



TOWN OF QUEENSBURY

The Town of Queensbury is beginning to electrify their fleet with a new Toro Revolution Z Master. Thanks Julian!



GARDNER-DICKINSON SCHOOL

Gardner-Dickinson School got a new Toro Z Master 2000, thanks Rocco!



MALONE GOLF CLUB

Malone Golf Club got their new Toro MultiPro 5800, thank you Dustin!



SARATOGA NATIONAL CEMETERY

Saratoga National Cemetery took delivery of their new Harper Versa-Vac, just before leaf season. Thanks Bill!



BARNEY ROAD GOLF COURSE

Mike was happy to see his new Toro GreensPro 1260 arrive at Barney Golf Course. Thank you!

Toro Unveils New Siteworks Equipment

eDingo TX750

ELECTRIC TECHNOLOGY

Models: 22230, 22231

Meet the unique demands of interior construction and demolition with the productivity-boosting Toro® eDingo® TX 750. Toro's patented HyperCell Battery technology offers up to 8 hours of quiet runtime and zero engine exhaust emissions. Intuitive controls and compact design allow operators to easily maneuver in tight spaces while saving time, reducing fatigue and boosting productivity, offering features such as:

- **Heavy Lifting Power:** Efficiently handles tough jobs like material transport and demolition with ease, reducing reliance on manual labor.
- **Performance without Compromise:** Toro's HyperCell Battery System delivers long-lasting run times and quick-charging capabilities, ensuring 8 hours of operation throughout the workday.
- **Compact footprint:** The Narrow Track unit measures a compact 31.5" wide, which means it fits through 3' doorways and maneuvers easily in confined spaces like hallways, small rooms and through gates.
- **Patented Controls:** Intuitive, easy-to-learn T-handle controls empower operators to master the machine in minutes.
- **Narrow and Wide Track Models:** Tailored options for navigating tight indoor spaces and outdoor terrain.



Ultra Buggy® e2500-TS

ELECTRIC TECHNOLOGY

Models: 68140

The Ultra Buggy e2500-TS is built to benefit customers by maximizing uptime, versatility, and ease of use. Its durable construction and operator-friendly design ensure it can handle the demands of frequent use while delivering exceptional performance on a wide variety of job sites. Key features include:

- **High Capacity and Power:** The Ultra Buggy e2500-TS replaces 4 to 5 wheelbarrow loads or two to three loader trips, significantly reducing trips and heavy lifting.
- **Compact Design:** At just 31.5" wide, it easily navigates tight spaces such as doorways, hallways, small rooms and gates, making it ideal for interior and outdoor projects.
- **Reinforced Track System:** Built to traverse rough terrain with ease while minimizing turf disturbance.
- **T-Handle Controls:** Simple, intuitive operation that allows crews to master the machine in minutes.
- **Durable Performance:** With a 2,500 lbs capacity and up to 8 hour runtime powered by the Toro HyperCell Battery System, it's built to work as long and hard as your crew.



Ultra Buggy® e2500-THL

ELECTRIC TECHNOLOGY

Models: 68142

In an industry where time is money, the Ultra Buggy e2500-THL delivers unmatched value:

- **76" Dump Height:** Effortlessly dump materials directly into a 30 yard dumpster, saving time and eliminating manual debris handling.
- **31.5" Width:** Navigate tight indoor spaces, doorways, and hallways with ease.
- **Reinforced Tracks:** Handle tough terrain and obstacles without breaking stride.
- **Low Ground Pressure:** Preserve surfaces while maximizing maneuverability on all job types.



For more information or a quote please contact your Commercial Salesman.

Toro Revolutionizes Golf Course Irrigation with Spatial Adjust Software (cont.)

“The efficiency is incredible,” says Steve Datwyler, director of grounds, Ravenna Country Club, Littleton, Colorado. “I started using Spatial Adjust on one hole and have now expanded to all 18. I’m using less water on them than before. I ran a projected flow and after pushing the updates, it was 90,000 gallons less. One of my long-time employees even commented this morning that he’s never seen the moisture so consistent across the fairway. It’s normally dry in one area or there’s a spot where water flies up from the tires, but now it’s consistent and uniform.”

Spatial Adjust software equips supers with the ultimate tool for precision irrigation, seamlessly integrating cutting-edge data collection with the Lynx Central Control platform. Backed by Toro and TerraRad, it sets the new standard for golf course management.



Toro Unleashes Lynx® Drive Golf Irrigation Software

Toro is proud to announce the availability of Lynx® Drive — a completely reimagined, mobile-first approach to golf irrigation software. Designed specifically for golf course superintendents, the all-new Lynx Drive is now available for order.

The new Lynx Drive is an entirely renewed system designed for real-time, on-the-go control. No matter where they are on the course, Lynx Drive puts irrigation management directly into a superintendent’s hands. Field tested on a wide range of courses, including Bobby Jones Golf Course in Atlanta, Georgia, the system has gained popularity for its usability and efficiency.

“Toro continues to design top-tier solutions for irrigation management that play a vital role in our ability to maintain our revolutionary, reversible course,” says Kyle Macdonald, superintendent of Bobby Jones Golf Course in Atlanta, Georgia. “The new Lynx Drive system makes it possible to respond to issues in real time with nearly pinpoint accuracy while keeping the entire crew updated on needed actions.”

With Lynx Drive, superintendents can immediately respond to changing course conditions, shifting weather and unexpected emergencies — all from a mobile device. Designed for easy use on smartphones and tablets, the streamlined layout of Lynx Drive highlights the features used daily to optimize irrigation management. The incredibly intuitive display includes larger text and high-quality images with bright colors for enhanced visibility and detail.

The Lynx Drive system ensures the entire crew is informed, minimizing delays and eliminating guesswork. Smart Notes provides immediate communication with detailed notes, photos and team transparency. The ability to include a device name makes it possible to identify who performed each action, while time-stamped photos add valuable detail. Smart Notes maintains a full notes history for up to one year for easy reference.

Smart Notes and flags help to pinpoint reports and match them to an exact station on the map, ensuring precise adjustments in the correct location. All alerts and a detailed course map are visible to the entire crew on both mobile and desktop platforms for fast, coordinated action. Expanded mapping integration enables users to include files that can be shared through mobile and desktop programs. This leads to streamlined communications, more efficient operations and greater productivity every day.

“We previewed Lynx Drive at the GCSAA Show and are thrilled to get it in the hands of the superintendents it was designed for,” says John Dalman, senior product marketing manager at Toro. “This revolutionary system will change the way courses perform preventative and reactive maintenance, improving course conditions and crew collaboration.”

Lynx Drive is currently compatible with two-wire Lynx Smart Module (LSM) systems. Support for additional platforms, such as satellite and hybrid, will be introduced with future releases.

Lynx Drive sets the standard for innovative irrigation management systems with on-the-go controls, faster response times and connected communication for precision and productivity.



For more information, please contact Jeff Joedicke at jjoedicke@grasslandcorp.com.

New Ventrac Attachments

MZ480 BRUSH CUTTER

Take down the toughest overgrowth with the Ventrac MZ480 Brush Cutter, designed for serious brush mowing. Using centrifugal force, its heavy-duty spindle drives two 0.5" thick break-away blades, delivering unmatched cutting performance. A hinged front gate allows dense brush—up to 3" in diameter—to feed directly into the blades, making it the most aggressive brush-cutting deck in the Ventrac lineup.

At just 48" wide, it's the narrowest mower offered, perfect for tight-access areas without sacrificing power. Ideal for estate management, commercial use, land reclamation, municipalities, and DOT applications, the MZ480 is built to handle the toughest jobs with ease.



HE200 POWER GRAPPLE

The Ventrac HE200 Power Grapple is a versatile rock and root grapple bucket designed to lift, clamp, and move heavy materials with ease. Using second auxiliary hydraulics, the grapple opens and closes while the hitch arms control lifting, and auxiliary hydraulics manage curling and dumping. Its open-bottom design lets dirt and small debris fall through while securely gripping logs, rocks, and brush. Ideal for estate management, commercial work, land reclamation, and municipal applications, this attachment makes clearing and material handling faster and more efficient. When the job demands power and precision, the HE200 delivers.



EW530 WEEDBINE

The Weedbine is an eco-friendly solution for weed control in cool-season grasses. This mechanical weed control option will be a game-changer for playgrounds, parks, sports fields, and other locations where chemical use is limited.

The machine itself uses rotating bristles that "sweep" grass and broad leaf weeds into a serrated auger apparatus. The grass passes through with minimal damage while the broadleaves become damaged. Over time, weeds are starved of energy and vanish—no chemicals required!



SE530 V-BLADE

The 53.125-inch wide Ventrac SE530 V-Blade maximizes efficiency with the ability to quickly change from V-plow to scoop to straight blade, all from the convenience of Ventrac's exclusive S.D.L.A. Control System. With a 47.5" V width, the SE530 is ideal for walks and areas that larger blades are unable to plow.

Standard features include hydraulically activated wing cylinders, mechanical trip, adjustable cast iron skid shoe discs, reversible high carbon hardened steel cutting edges, and a center shoe for gliding over rough terrain. Pivot points are fully greasable to ensure proper operation, even in the worst environments.

DROP SPREADER - SA252

The Ventrac Sidewalk Drop Spreader is the ultimate tool for spreading an array of deicing materials with precision flow control. Designed with a narrow frame and a 40" drop pattern, this spreader is ideal for spreading material on sidewalks and other narrow walkways.

Material is evenly distributed using a unique compression roller system. An easy gate adjustment allows for fine tuning flow rates based on the type of material being spread and the desired quantity being applied. The wireless remote control regulates five motor speeds for quick flow adjustments from the operator seat.

The stainless-steel hopper prevents premature failure due to rust and corrosion. The innovative agitation system prevents material bridging and eliminates the need for a traditional, noisy vibration motor.



BRINE KIT - SB350

The new Ventrac brine kit adds liquid de-icing to the 4520 platform and accomplishes de-icing in any scenario. The SB350 brine kit has a 35-gallon tank for significant capacity on sidewalks and transitional areas. It integrates seamlessly with the tractor - giving operators complete control of the system from inside the heated cab.

The brine kit comes standard with an 8' spray wand for manually reaching steps, entryways, and tighter areas. It also has an optional 25' hose reel kit to extend the reach to places inaccessible by the machine.



For more information or a quote please contact your Commercial Salesman.

THANK YOU CUSTOMERS!



NYS PARKS DEPT-GRAFTON LAKE

NYS Parts Dept took delivery of their new remote controlled Ventrac 45RC. Mowing the Dunham Reservoir just got a lot easier. Thanks Brian and Rob.



TOWN OF HALFMOON WATER DEPT

The Town of Halfmoon Water Dept joined the Ventrac family with a 4520N and tough cut. Thank you Frank!



BRANDON

Brandon took delivery of a Ventrac 4520N with a finish deck, tough cut, power bucket, and trencher. Thank you!

SUNY Delhi Turf Program Tests the Ventrac Weedbine

SUNY Delhi’s renowned Golf and Sports Turf Management program prepares students to install and maintain beautiful, functional turf surfaces for golf courses, athletic fields, stadiums, and other venues.

Grassland Equipment & Irrigation continued their support of the program with a new Ventrac 4520N this season and attachments for the 2025-26 school year. The attachments include a MJ840 Contour Mower, HQ682 Tough Cut Brush Mower, and all new EW530 Weedbine.

Throughout the fall semester, the program conducted a trial utilizing the Weedbine. Chris Kelly, a senior, along with instructor Jeremy Swift facilitated the trial on the golf course. The innovative tool has the ability to remove weeds from turf without the use of chemicals. Data from the weedbine trails were separated into five categories based on how the plots were treated. These were split up into check plots, weedbine only plots, weedbine and overseeding of 3 lbs./1000 square feet of perennial ryegrass, weedbine and overseeding of 6 lbs./1000 square feet of perennial ryegrass, and overseeding only of 6 lbs./1000 square feet of perennial ryegrass. Data was collected by looking at percentage of total weed coverage per each individual plot versus the amount of turfgrass.



Check plots

The average weed coverage on July 30th was 41% and on October 30th was 33%. An **average decrease in total weed coverage of 8.3%** from July 30th to October 30th.

Weedbine and overseeded with 3 lbs./1000 square feet of perennial ryegrass

The original weed coverage was 25% and the post weedbine coverage was 8.7%, leading to an **average decrease of 16.3%**.

Weedbine and overseed of 6 lbs./1000 square feet of perennial ryegrass seed

The original weed coverage was 22% and the coverage on October 30th was 8.7%, leading to an **average decrease of 13.3%**.

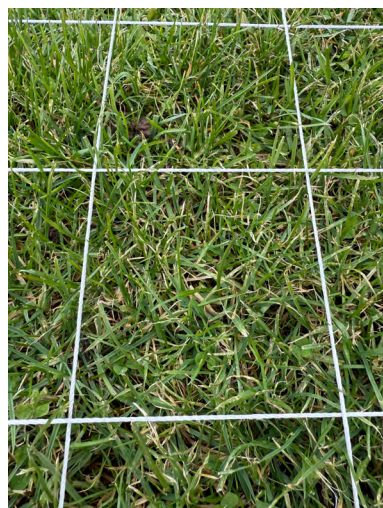
Weedbine only plots

The weed coverage on July 22nd was 25.6% and the October 30th weed coverage was 18.3%, leading to an **average decrease in weed coverage by 7.3%**.

Conclusion

What was found during this study was that over the course of this small growing season, while overall all weed pressure decreases, the Weedbine attachment increases or enhances this process.

However it was also discovered that much of the weeds growing in these plots had adapted to the Weedbine practice. The most prevalent weed growing in these plots was clover, and while most of it growing above the turfgrass had been removed, much of it lower to the ground had continued to creep and had not been damaged. This could have been due to the Weedbine attachment not being able to go any lower than 2" HOC.



Overall, the weedbine only and weedbine with 3 lbs. and 6 lbs./1000 square feet of overseeding showed the greatest amount weed depletion compared to the overseed only and check plots. Plots with large amounts of creeping bentgrass showed very thin and chlorotic turf, which could be a possible side effect to the weedbine.



MILL ROAD ACRES GOLF COURSE

Mill Road Acres GC added a new Ventrac 4520N and Toro ProCore 648. Thanks Jay, Gloria, and Tom!



CITY OF COHOES

The City of Cohoes joined the Ventrac family with a cabbed 4520N, snowblower, broom, v-blade, and finish deck. Thanks Steve and Mike!



REAR PARK GC/CITY OF TROY

Frear Park GC and the City of Troy added four new KJ520 brooms to their Ventrac fleet. Thanks Greg, David, Chris, and Kevin.



MCCANN MEMORIAL GOLF COURSE

Superintendent Chris Kemble at McCann Memorial Golf Course in Poughkeepsie with their new 4520N and Boom Mower.



PHEASANT HOLLOW GOLF COURSE

Pheasant Hollow GC joined the Ventrac family with a new 4520N, contour deck, and turbine blower. Thanks Dave, Steve, Bill, Brian, Bob, and Matt!



WESTHILL SCHOOLS

Westhill Schools ground crew taking possession of their new 4520N w/ a cab and snowblower. Thanks guys!



PODIUM PROPERTY CARE

Podium Property Care in Lake Placid joined the Ventrac family with a 4520N, snowblower, and plow. Thanks Nate!



MOHAWK GOLF COURSE

Julio was very excited to see their new Ventrac 4520Ns arrive at Mohawk Golf Club. Thank you Matt and Eric!



KNOLLS ATOMIC

Knolls Atomic got three new Ventrac 4520N to add to their fleet, that's now eight! Thanks Glenn and Bob.

Grassland Equipment & Irrigation Corp.
892 Troy Schenectady Road
Latham, New York 12110
Phone: 518-785-5841
Fax: 518-785-5740
www.grasslandcorp.com



PRESORT STD.
US POSTAGE
PAID
ALBANY, N.Y.
PERMIT # 1097

Visit Grasslandcorp.com to see our full selection of New and Pre-owned Equipment

Grassland has a great selection of Pre-Owned Toro equipment for turf professionals on a budget. These units can be offered with a factory supported warranty and financing is available. Selection varies and changes over time. If you are in the market for quality Pre-Owned equipment, contact your Grassland representative. Even if we do not have what you are looking for, we may be able to locate a unit to meet your needs. Why purchase from a third party broker when you can buy quality equipment from people who can offer you a Toro Factory Warranty and outstanding local service and parts support.



Aerators



Bunker Rakes/Infield Pro



Debris Equipment



Greens Mowers



Reel Mowers



Rotary Mowers



Site Works Equipment



Snow Removal



Sprayers



Specialty



Top Dressers/Seeders



Utility Vehicles