

## GRASSLAND NEWS

Grasslandcorp.com | Latham: (518) 785-5841 | Liverpool: (315) 457-0181

### THE REVOLUTION TRAILER IS HERE

We are taking Toro's new Revolution Series and other electric products on the road! This winter we purchased a new enclosed trailer to dedicate to Toro's complete line of commercial and residential electric products (see page 7). The mobile showroom will allow potential customers to get hands-on with the products and try the tools for themselves.



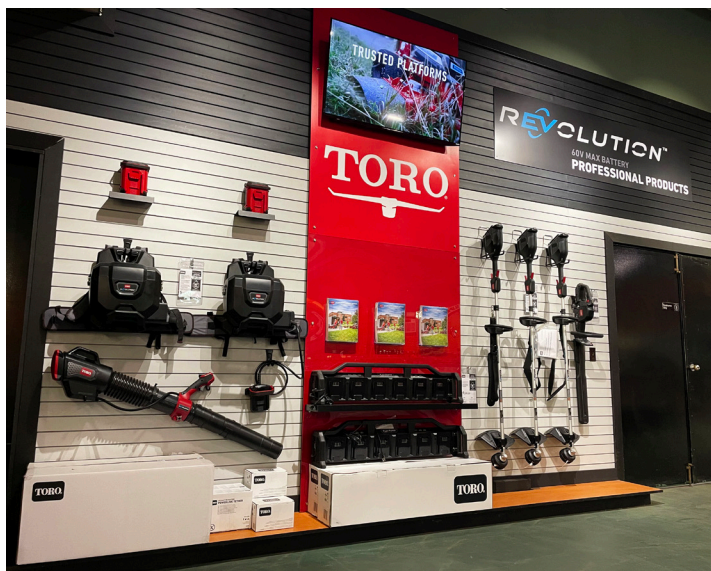
On one side of the trailer, we have Toro's residential 60V Flex Force family of products (red side). And on the other, we have Toro's all new commercial-grade Revolution handheld tools (grey side). Also residing in the trailer will be Toro's all new Revolution Grandstand and Revolution Z Master mowers.

Another cool feature... all the lights inside the trailer are powered by a Toro 60V battery themselves! Showcasing the functionality and versatility of the 60V battery line!

**If you are interested in trying Toro's electric products, please contact your Grassland salesman to schedule a visit today!**

### NEW Toro 60V Display Wall - Latham

The Toro Company's 60V lithium-ion battery collection has been steadily growing since its inception a few years ago. With over 75 tools and the introduction of the Revolution commercial grade handheld tools, it is clear that Toro is heavily invested in this battery system. That being said, we needed to adapt and provide a space to educate our customers and showcase the 60v Flex-Force Power System.



We took our existing 52' long wall that was not being utilized properly and gave it an overhaul. We upgraded the slatwall with a clean grey and black look, added the Toro red stand-offs, complete with TVs, literature racks, and bold branding! The left-hand portion of the wall is dedicated to Toro's Revolution commercial product and to the right, we have Toro's extensive consumer 60V battery product. The lighting was also upgraded to highlight the product and brighten up the space.



**HARPER HAWK SELF-PROPELLED TURF SWEEPER**

## GRASSLAND WELCOMES HARPER TURF EQUIPMENT



We are very excited to welcome Harper Turf Equipment to the Grassland family. Harper's complete line of turf vacuums and sweepers is a welcomed addition and compliments our turf product line greatly. The Harper turf and landscape products are built with the durability and usability you expect from any line Grassland Equipment carries. From their outdoor surfaces, to mulching, to the clean and quiet turf vacs, Harper Turf has solutions for all of your turf and landscaping needs.

### PRODUCT SPOTLIGHT

**Harper Hawk** - a self-propelled turf sweeper designed for superior pick up performance. Work smarter, not harder, with the Harper Hawk.

**TV40** - Powerful pick up performance from the cleanest and most cost-effective vacuum on the market, the TV40 is the popular choice to clear leaves and debris.

**TV60 RE** - Designed for large area debris removal, the TV60 RE is the perfect solution for picking up grass, leaves, trash and thatch.

**TV60 RHD** - Maneuverable and versatile, the TV60 RHD is the ideal tool for verti-cutting and vacuuming in 1 pass.



**HARPER TV60 RE VAC/SWEEPER**

Contact your Grassland commercial salesman for more information or to schedule a demo

### THANK YOU!



### GROVER CLEVELAND AND ELMA MEADOWS GOLF COURSE

Pat Pliszka, Jim Wasuira and Greg Pitillo from Erie County Parks- Grover Cleveland Golf Course and Elma Meadows Golf Course are getting trained on their new Foley Grinders. They are very excited about the upgrade in their grinding equipment.

**North Syracuse CSD Toro DXi Control System**

Recently North Syracuse Central Schools District upgraded their existing irrigation controllers with a Toro DXi control system. This cloud-based system allows NSCSD sports field managers Aaron Schanbacher and Rich Hill to operate all of their controllers across three campuses located miles apart, with a mobile device. Conventional 24V, 2-wire, or a mix of both is available in wall mount or pedestal enclosures. Communication options include ethernet, radio, Wi-Fi, or cellular modem which North Syracuse Schools is utilizing. Cellular modems come with 10 years of built in service, no subscription is required with the purchase of a cellular kit.



More information on DXi and the cloud-based control ProMax Connect app can be found at [dxi.toro.com](http://dxi.toro.com) or contact **Jeff Joedicke** [jjoedicke@grasslandcorp.com](mailto:jjoedicke@grasslandcorp.com).

**NEW Grassland Irrigation Hires**

Grassland has diligently been working on increasing hiring and improving operations within the irrigation department in Latham. Recently we hired Dan Fronk as the Irrigation parts/warehouse manager and Rob Bennett as the Irrigation counter sales associate.

**Toro/Ventrac New York State Contract**

**Heavy Duty Equipment**

*July 7, 2022 to April 30, 2025*

The Toro Company has been awarded Contract # PC69682  
Group: 40625, Award: PGB-22792

This LOT includes all Mowing Equipment, Golf & Commercial Irrigation Products , Aeration Equipment, Sprayers, Zero Turn Mowers, Siteworks Systems Dingo, Trenchers, Turf Renovation Equipment, Contractor Equipment, Tree Care Products, Work Vehicles, Snow Equipment and accessories and options listed in Toro’s Current Price List. This LOT also includes all Ventrac Tractors, SSV, attachments and accessories.

Visit OGS for more information or contact your Grassland Representative.

**Sourcewell Cooperative Purchasing Contract**

Please Note that Tax Supported Organizations (State & Federal Agencies excluded) may be able to purchase Toro Products not currently on NYS Contract by utilizing the Sourcewell Cooperative Purchasing program. Sourcewell works with public and non-profit agencies, who competitively solicit and award national contracts for aggregated use. This cooperative strategy offers lower costs plus time and resource savings to participating agencies. For detailed information on Toro’s Sourcewell agreement go to [www.sourcewell-mn.gov/contract-search?category=All&keyword=Toro](http://www.sourcewell-mn.gov/contract-search?category=All&keyword=Toro)

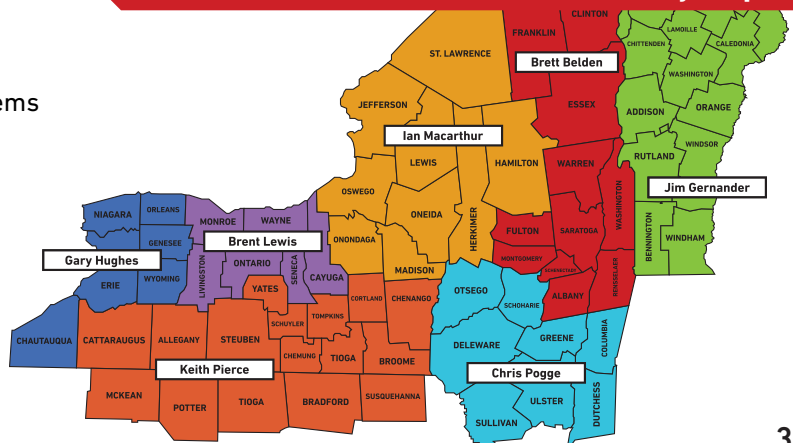
Sourcewell Cooperative Purchasing is dedicated to serving:

- City/Local Government
- County Government
- Public and Private Educational Institutions and Systems
- Special Districts
- Government-Education Health Care Entities
- Nonprofits

This is an optional use program with NO FEE TO PARTICIPATE in the program.



**Toro/Ventrac Commercial Sales Territory Map:**



# THANK YOU CUSTOMERS!



## BATTLE ISLAND STATE GOLF COURSE

Battle Island State Golf Course's superintendent Mary taking delivery of their new Groundsmaster 4500.



## ALBION CENTRAL SCHOOL DISTRICT

Kevin Hazel and operator Dylan from Albion CSD check out their new Toro Groundsmaster 3200AWD.



## UNIVERSITY OF BUFFALO

John Lewis of UB is very happy to accept delivery of their new Toro Greensmaster 3300.



## CLIFTON FINE MUNICIPAL GOLF

Clifton Fine Municipal Golf Course taking delivery of their new Greensmaster 3360.



## SUNY BINGHAMTON

The crew from Suny Binghamton take delivery of their new Toro Groundsmaster 4500s.



## GOLF OF NEWPORT

Golf of Newport taking delivery of their new Greensmaster 3320.



## ROME CITY SCHOOL

Rome City School's 3 new Ventrac 4520s equipped with cabs and snowblowers.



## FAIRWAYS OF HALFMOON

Successful Proforce blower delivery to Green Lakes State Park.



## GOLF OF NEWPORT

New Ventrac 4520Y with contour deck for Golf of Newport.

## TORO ELECTRIC AND HYBRID SOLUTIONS



## TORO'S INVESTMENT IN ELECTRIFICATION, AUTONOMOUS SOLUTION, AND SMART, CONNECTED TECH FOR THE GOLF INDUSTRY

Since its founding, Toro has prioritized developing the right products, at the right time, for the right purpose. Which is why Toro spent the last two decades investing in research and development to electrify tried-and-true equipment, and bring autonomous solutions and smart, connected technology to the golf industry.

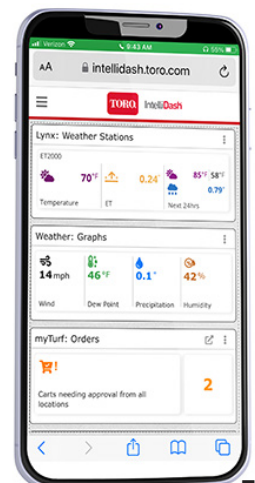
“Toro is incredibly proud of its legacy in the golf industry, and we’re excited to lead the charge with this new generation of golf solutions,” says Greg Lawrence, Director, Product Marketing at Toro. “In 2022, we placed our first GeoLink Solutions Autonomous Fairway mowers for field testing. We have gained valuable insights on the capabilities of those machines and are continuing to fine-tune that technology. We’re also excited to debut several new battery-powered products that join Toro’s growing portfolio of electric and hybrid solutions as well as our new IntelliDash platform at this year’s show.”

The innovative GeoLink Solutions Autonomous Fairway Mower aims to alleviate the issues of labor shortages and budget constraints experienced by customers in the golf industry. Superintendents will be able to increase productivity and get more consistent results with these mowers. Field testing is underway to help Toro identify applications in which today’s technology can perform to the levels expected by customers and where further development and additional capabilities are required.

Toro is also introducing battery-powered versions of its proven and popular machines, such as the new eHoverPro, Groundsmaster® e3200 and Greensmaster e1026 (see more on page 8).

Additionally, superintendents can make the most of these new (and existing) Toro equipment offerings and irrigation products by relying on vital course data from Toro’s new IntelliDash golf course management platform. With IntelliDash, golf course superintendents can view real-time operational data, including agronomic conditions, labor, asset location and equipment health. Superintendents can then use that data to simplify course operations, identify inefficiencies and better allocate resources.

These battery-powered and autonomous advancements build on Toro’s trusted lineup of electric and hybrid greens and fairway mowers, and along with the new IntelliDash platform, are changing the landscape of the golf course industry. Ultimately, this equipment and smart, connected technology will improve productivity and performance for the superintendents who will come to rely on them. With the implementation of this next generation of equipment and technology, mowing will become more time and cost effective.



# THANK YOU CUSTOMERS!



## NIAGARA FALLS SCHOOL DISTRICT

The technicians Aldo and Pat from Niagara Falls CSD take their new Toro Workman UTX for a test ride.



## GROVER CLEVELAND GOLF COURSE

Jim Wasuira from Grover Cleveland GC is very excited about their new Toro Greensmaster eTriflex 3370.



## GROVER CLEVELAND GOLF COURSE

Jim Wasuira receives their second delivery, a Toro Reelmaster 3575-D fairway mower.



## DEVEAUX WOODS STATE PARK

The crew from DeVeaux Woods State Park in Niagara Falls New York are very excited about their new Ventrac.



## FAIRWAYS OF HALFMOON

What's better than getting a new Triflex 3300? Getting two! Thank you to Josh and the crew at Fairways of Halfmoon.



## SCHENECTADY MUNICIPAL GC.

Out with the old and in with a new Groundsmaster 4500-D! Thank you Schenectady Municipal Golf Course.



## PENDLETON CREEK GOLF CLUB

Joe Stein from Pendleton Creek GC is very excited about their new Ventrac 4520Z with a Contour Deck.



## LEWISTON PORTER SCHOOL DISTRICT

Head Groundsman Tyler (right) and Jason of Lewiston Porter CSD accept delivery of their new Ventrac 4520Z.



## BUFFALO OLMSTED PARKS CONSERVANCY

Fleet Director, Chris Hartgrove and his technicians Jake and Daniel are excited to receive their new 96" Z Master 7500s.



POWER FOR EVERY PROFESSIONAL

## NEW 60V MAX REVOLUTION HANDHELD TOOLS

Designed with input from professional landscape contractors, the new 60V Max Revolution Series Handheld tools were built to perform in demanding work conditions and environments all day long. Powered by Toro's Flex-Force Power System®, the new line includes a dual-battery backpack that can hold two 10 Ah batteries — which is designed for comfort and available as a power source for the leaf blower or string and hedge trimmers to keep jobs moving all day.

Operators can easily swap batteries out, so when one battery is done, the workday doesn't have to be. Outpacing the charging speed of larger, lower voltage batteries, the 60V power comes to you fast — taking just 50 minutes to fully charge our largest battery in the all-new six-pod rapid charger. Plus, the batteries are versatile, powering both Revolution Series handheld tools and the Toro 60V Max 21" Heavy Duty mower.

No matter what the challenge, the Toro integrated 60V battery platform ensures professionals always have a Revolution tool ready. That level of accessibility is an industry first, as many leading competitors are incompatible with tools that require their backpack.

### REVOLUTION STRING TRIMMER

- Rugged solid shaft design
- 16" cutting width and .095" line (greater capacity)
- Bump-feed/easy-load head
- Up to 240 minutes of runtime
- Variable 2-speed operation produces 5300 or 6400 rpm
- Included shoulder harness

### REVOLUTION HEDGE TRIMMER

- 26" bar with 1.2" cutting capacity
- Dual-sided cutting blades run both directions
- Reverse mode for quick unjamming
- 180° rotating handle for vertical or horizontal cutting
- Top side blade guard for plant gathering
- Up to 600 minutes of runtime
- Variable 2-speed operation produces 3200 or 4100 spm

### REVOLUTION BACKPACK BLOWER

- Comfortable, sturdy backpack with integrated handle
- LED battery diagnostics and capacity to carry two batteries
- Interchangeable arm cannon or power tether
- 730 CFM at 160 MPH
- Variable speed trigger with turbo boost and cruise control
- Included storage strap
- Increased over-mold for more rugged operation and drop resistance



### REVOLUTION POWERLNK TETHER

- Connect your backpack power source to your tools
- Removes battery weight from tools
- Doubles handheld tool battery capacity

### 60V MAX 6-POD CHARGER

- 12 AMP rapid charger
- 6-pod battery charging capacity
- Charges any combination of 60V Flex-Force Batteries
- 2 charge modes: sequential rapid mode; equal mode

### 60V MAX 10Ah Battery

- 33% more capacity over 7.5 Ah battery
- Interchangeable in all 60V Revolution commercial tools

### PROVEN PLATFORMS, NOW BATTERY POWERED

#### Groundsmaster e3200

COMING SOON

The Groundsmaster e3200 features the same rugged chassis, commercial-grade mowing deck and intuitive operator controls as the current diesel-powered platform, with all the power of Toro's proprietary HyperCell® battery technology. It comes standard with 11 lithium-ion HyperCell batteries but can be configured with up to 17 HyperCell batteries for heavy-users in more demanding applications to achieve all-day runtime.

#### Groundsmaster e3200 features and benefits

- HyperCell Power System
- 11 HyperCell batteries standard
  - Configurable w/ up to 17
- All-day runtime\*
- 3.3 kW on-board charger
- InfoCenter display
- Same chassis, deck, controls as diesel-powered platform
- 60" side or rear discharge deck
- Zero-operating emissions

\*Actual runtime may vary depending on terrain, mowing conditions, and a variety of other factors



#### Workman MDX Lithium

COMING SOON

The Toro® Workman® MDX has been a trusted utility vehicle for golf course superintendents and their crews for more than 20 years. Bringing that history to the age of electrification, Toro is excited to announce the Workman MDX Lithium. The new Workman MDX is powered by Toro HyperCell® batteries. The battery-powered MDX comes with the same payload capacity, comfortable ride and selection of attachments that are available in the gas or diesel-powered Workman MDX.

#### Workman MDX Lithium features and benefits

- HyperCell Power System
- On-board charger
- SRQ (Superior Ride Quality) suspension
- Automotive-grade rack-and-pinion steering system



#### Greensmaster e1026

COMING SOON

Toro is excited to preview the new Greensmaster® e1026 walk greens mower, an electric version of the popular and proven Greensmaster 1026. The e1026 will join the existing Toro Greensmaster e1021, and eFlex 1021 models. At a mowing width of 26", it offers greater productivity while providing a more pleasant operator experience void of any engine exhaust emissions and significantly reduced noise levels.

#### Greensmaster e1026 features and benefits

- Lithium-Ion Technology
- Dual Precision Adjustment (DPA) cutting units
- Featuring Toro's EdgeSeries reels
- Innovative operator controls
- Telescoping loop handle w/ 5 positions



**PROVEN PLATFORMS, NOW BATTERY POWERED cont'd**

**eHoverPro**

**COMING SOON**

The new eHoverPro provides a zero-engine emission solution for golf course superintendents maintaining slopes and contoured surfaces. The mower is fully compatible with the Toro 60V\* Flex-Force Power System™, allowing users to swap the 7.5Ah batteries across the extensive lineup of tools. The eHoverPro is built on a foundation of strength and is ultra-lightweight, which gives users better control and stability. Mowing hillsides, around bunkers and tee boxes is made easier with the help of a slope mower.

**eHoverPro features and benefits**

- 60V\* Flex-Force Power System
- 7.5Ah battery
- Up to 25 minutes of runtime
- 5-Amp Rapid Charger
- Low noise and hand-arm vibration
- 18" cutting width
- Mow slopes up to 45 degrees



**eDingo 500**

**COMING SOON**

Toro is introducing the next generation in electric compact utility loaders: the Toro eDingo 500. Exceptional runtime in a compact design allows the eDingo to fit in the tightest spaces and tackle the toughest of jobs. Ideal for indoor construction and demolition, the eDingo 500 is powered by the HyperCell® Power System. The eDingo is optimized to deliver up to an eight-hour continuous runtime, while maintaining a 515lb ROC allowing it to complete more jobs with less hassle.

**eDingo 500 features and benefits**

- HyperCell Power System
- Up to 8 hour runtime
- 81" hinge pin height
- 515lb rated operating capacity
- 30" width



**Ultra Buggy e2500**

The electric Ultra Buggy is powered by Toro's HyperCell™ battery technology. Designed for indoor use, landscape contractors who operate in tight or semi-enclosed urban areas will find the new, zero engine exhaust emissions electric Ultra Buggy beneficial on the job site. The proprietary HyperCell battery system delivers up to eight hours of continuous run time and charges using a standard 120V wall outlet. The compact design allows the electric Ultra Buggy to fit through a 3-ft door with a crash bar and reach areas of the jobsite that larger machinery cannot.

Built to be versatile and agile, it's equipped with a fold-up platform so operators can choose to stand on or walk behind the unit. Ready to haul up to 14 cu. ft. or 2,500 lbs. of material in a rugged polyethylene tub or an optional a steel tub. The mounted directional and dump switches ensure continuous movement while operating the machine.

**Ultra Buggy e2500 features and benefits**

- HyperCell Power System
- Up to 8 hour runtime
- 2,500 lbs carrying capacity
- 31.5" width



# THANK YOU CUSTOMERS!



## CITY OF ALBANY

The City of Albany added to their fleet today with another Toro Groundsmaster 3300. Thanks Mark!



## SHENENDEHOWA CENTRAL SCHOOL

Shenendehowa CSD got their new Toro Groundsmaster 3300, just in time for the spring! Thank you Barb, Rick and Greg.



## SARATOGA SPA GOLF COURSE

Chad Murphy got his new Toro Groundsmaster 3300s today at Saratoga Spa Golf Course. Thank you!



## TOWN OF COLONIE PARKS DEPT

The Town of Colonie Parks Dept. was very excited to get their new Toro Groundsmaster 4000, thank you Dan.



## RENSELAER POLYTECHNIC INSTITUTE

They're always keeping the fleet up-to-date at RPI. A new Ventrac 4520Z today to replace an aging unit.



## KNOLLS ATOMIC POWER LAB

Knolls Atomic Power Laboratory got their new Toro Dingo TX1000 today. Thanks Jose!



## OLDE POST ROAD GOLF CLUB

Olde Post Road GC took delivery of their new 4520Z with Contour and Tough Cut.



## CRAIG WOOD GOLF CLUB

Mow or snow? The guys at Craig Wood Golf Club are ready for both! Thank you Matt St Louis and Willis Clark.



## SOUTH GLENS FALLS SCHOOL

South Glens Falls CSD got their new Z Master 144", instant productivity increase! Thanks Rick and Trapper.

## MADE TO MOVE: TORO LAUNCHES NEW, COMFORTABLE VISTA® SHUTTLE

### TORO VISTA CARTS

### COMING SOON

Toro is excited to expand its commercial vehicle portfolio with the all-new Vista® shuttle. Designed for the task of transporting multiple passengers comfortably and conveniently, Vista is ideal for resorts, stadiums, universities and municipalities. A HyperCell lithium-ion, battery-powered option meets the needs of customers looking for an alternative energy solution.

Customers can choose from 4, 6 or 8 passenger options in both EFI gas and lithium-ion powertrains, with the option to add additional power on lithium units to further boost performance and keep users powered for longer. For added operator and maintenance convenience, users can easily view speed, battery level (on lithium-ion models), fault codes and other key info on the LCD screen located on the dashboard.



The new Vista lithium option is powered by Toro HyperCell batteries — Toro's proprietary, patent-pending lithium-ion technology. Toro has implemented rigorous standards that require every battery to pass extensive environment and third-party certification testing. The distributed Battery Management System (BMS) optimizes battery performance to enhance reliability and longevity. HyperCell batteries provide diagnostic information to simplify and streamline any service needs. A third-party recycling program is available for batteries that reach end-of-life.



The attention to detail in the sleek and smooth design of Vista allows customers to provide a professional experience to their guests. Plus, each transport vehicle can easily be custom branded with decals, wrapped or painted, due to the use of TPO plastic in the body panels — allowing universities, stadiums and more to deck the shuttle out with their colors and logos.

Equipped for a smooth and relaxing experience during longer rides, Vista provides front and rear independent suspension, plenty of leg room, and ample onboard storage space. The steering wheel is designed so the driver can easily get in and out of the seat. A standard, fold-down rear seat with grip texture and a lip around the edge provides easy storage for bulky items, such as bags or boxes, and holds these items in place during transport.

The parking brake activates and deactivates on lithium models, which means fewer brake adjustments and less maintenance. Hydraulic disc brakes allow for swift, assured stopping power.

**Contact your Grassland commercial sales rep for more information.**

## **New Z Master 2000 Series**

With a rugged frame and deck modeled after the award-winning Z Master 4000, the new Z Master 2000 has a commanding spirit and the will to cut for years to come. Just like its impressive heritage, this machine delivers high-quality performance and has bullish attitude built into its DNA.

Its beefy TURBO FORCE® deck looks and acts tough — the new Z Master 2000 will cut through the toughest elements Mother Nature can throw at it. The TURBO FORCE deck is a 50 KSI 7-gauge high-strength steel deck, complemented with an extra-strength tubular chassis and durably rugged I-beam front-end. Add on Toro's patented MyRIDE® suspension system for go-all-day comfort, and you know this mower is built for the pros.

Never go without the tools you need as the new 2000 features several attachments to carry a multitude of tools and accessories on the go. And if that's not enough utility, easily increase your carrying capacity with the new two-inch hitch receiver. Designed for professionals who want to make the new mower their own, there are several options to accessorize the new Z Master 2000.



### **Models**

- 52" 24.5 hp 708cc // **77283**
- 48" 24.5 hp 708cc // **77281**
- 60" 24.5 hp 708cc // **77285**
- HDX Pro 60" 28 hp 810cc // **77288**
- MyRIDE® HDX 52" 23.5 hp 726cc // **77291**
- MyRIDE® HDX 60" 23.5 hp 726cc // **77294**

## **New SprayMaster**

Toro's new stand-on spreader sprayers makes treating turf a whole lot easier. The SprayMaster is the industry's most innovative product of its kind, featuring enhanced center of gravity tanks for less turf tear, an industry-first flip up hopper for ease of maintenance and materials management, and larger wheels for a more comfortable ride. Exclusive patented caster lock remains for straight-line tracking and precision spreading and spraying.

The new SprayMaster 60, SprayMaster 40 and SprayMaster 20 models feature smart enhancements for increased comfort and usability and decreased maintenance. Improved stability and balance translate to better chemical application at higher machine speed, while larger 24-inch tires on the 60 and 40 models, and 22-inch tires on the SprayMaster 20 model mean a smoother ride and better visibility.

Toro relied on professional contractor feedback to inform enhancements to the line, which resulted in small adjustments that will offer big returns when it comes to ease of use and maintenance on the new models.



### **features and benefits**

- 60 Gallon SprayMaster // **34240**
- 40 Gallon SprayMaster // **34242**
- 24 Gallon SprayMaster // **34246**



**MOHONASEN CENTRAL SCHOOL**

Mohonasen Central School can easily maintain and prep their game day fields now with their new Toro SandPro 3040.



**BARNEY ROAD GOLF COURSE**

The Barney Road Golf Course got their new Greensmaster 3150-Q today, everyone was camera shy.



**SUNY ALBANY**

SUNY Albany athletics department got their new Groundsmaster 4700 today. Thanks Shaun!



**STOWE MOUNTAIN CLUB**

Kevin Komer and Andrew Chubber of the Stowe Mountain Club with their new Greensmaster 1026s.



**SAINT MICHAEL'S COLLEGE**

An employee at Saint Michael's College in Colchester, VT looking mighty happy with their new Sand Pro 3040.



**ROME COUNTRY CLUB**

Rome Country Club superintendent Roger accepting delivery of their new to them Reelmaster 5410.



**TOWN OF COLONIE GOLF COURSE**

The crew at the Town of Colonie Golf Course took delivery of a great package today. Welcome to the Ventrac family!



**SCHUYLER MEADOWS CLUB**

Josh Nethaway and Schuyler Meadows Club are the newest addition to the Ventrac family!



**SADAQUADA GOLF CLUB**

Sadaquada Golf superintendent Stan Zombek accepting delivery of their preowned equipment.

## Toro 2-Wire Golf Control and INFINITY HEADS - The 'SMART' Choice

### LYNX® SMART HUB

The field controller that adds security, programmability and sensing to the benefits and simplicity of a two-wire system.

- The system can be segmented into manageable areas for simplified maintenance.
- Provides for in-field manual operation or troubleshooting
- Stores and runs a fully flow-managed irrigation schedule in the event the central computer is offline
- Creates a convenient point of connection for soil, flow and status sensors



### LYNX® SMART MODULE 2-WIRE

The Toro Lynx Smart Module 2-Wire Control System uses innovative technology to provide an irrigation solution that is reliable and efficient. Using a 2-wire path to communicate to buried control units, the system reduces the costs associated with traditional valve wire bundles and provides a solution that is vandal resistant, easy to install and easy to expand.



#### SPEED

Provides information faster than other 2-wire brands, reducing test times from minutes to seconds and providing greater visibility into the overall health of the irrigation system.



#### PRECISION

Apply water with one second resolution. The exact amount of water is placed exactly where it's needed.



#### UPGRADEABLE

Upgrade remotely with just a click. Innovative new features and benefits are just a click away.



#### DURABLE

Best in class surge protection to help weather the storm. It works with the Lynx Smart Hub, which protects the flow managed irrigation schedule, even in the event of central failure.

## Toro Sprinkler Head Specials

**Buy 4 - Toro FLEX800, INFINITY, or B Series Sprinklers at our already discounted prices and Get 1 Free - no Limit**

The **Flex800** is Toro's dual trajectory series. With many innovative features, its selectable trajectory provides a 15 or 25 degree setting with a simple turn of the main nozzle. It also offers a removable rock screen and stainless-steel valve seat. Available in 1" or 1.5" models as a Full Circle or combination Part Circle / Full Circle, and in NPT or ACME.

The **INFINITY** - Forget the shovel and potential damage to the turf as all components are accessible from the top, making these new sprinklers not only easy to service but also saving on labor time.

The **B Series** Golf sprinkler family brings you all the great features and performance of the FLEX800 Series sprinklers in a more economical body package specifically designed for block systems.

**\*Promotion Ends 10/14/2023. Buy 4 get 1 free price on bodies only applies if equal number of Conversion Assemblies are purchased with the bodies on the same order.**



**Buy 4 - FLEX or INFINITY series Conversion Assemblies and Get 1 Free - no Limit**

Conversion assemblies allow you to upgrade to Toro's latest features without having to purchase new heads. Simply replace the internal without digging and you're done.

**Promotion Ends 10/14/2023**

## Toro DXi™ Satellite Delivers Precision Irrigation Control With Mobile Access

Water is a precious commodity. Your grounds need it to stay healthy and looking their best, but it's important to only use the right amount of water at the right time and in the right areas. A central control system is the key to precise and efficient irrigation — and now there's a way to get even more precision capabilities with the convenience of remote operation.

### Introducing Toro DXi™

Designed with busy sports field, municipal and grounds crews in mind, Toro® DXi™ is an advanced central control satellite that supports two powerful software packages in a single controller platform. It can be powered by either Rain Master® Laguna™ Management Software or Toro Sentinel® Water Management Software (WMS), so users of either system can add DXi without having to replace their central control software. That's a significant advantage.

The DXi controller platform is also future-ready, so it has the flexibility to accommodate new innovations and changing site needs quickly and economically.

### Enhanced Hardware Features

DXi hardware can be built to order in a variety of configurations — from multiple enclosure options (including wall-mount and pedestal) to multiple irrigation methods (conventional, 2-wire or hybrid). It's packed with features that are designed for durability and ease of use, including:

- **Electronic paper-style LCD display** for visibility in heavy sunlight, with an integrated LED backlight for dark conditions and intuitive soft keys for easy selection
- **In-cabinet light** for easier maintenance in low-light conditions
- **Exceptional surge/lightning protection**
- **Pivoting mounting brackets** for less cumbersome in-field maintenance and installation
- **Custom-fit clear electrical board covers** that allow users to check wiring and connections at a glance and protect circuits from unwanted pests

In addition, DXi satellites allow for precision control and water management add-ons, such as the ability to manage multiple flow sensors and master valve pumps. They also support Toro flow and moisture decoders.

Whether you're looking to upgrade an existing system or you're planning for a new build or site, DXi opens up the possibilities for greater irrigation precision and control. To learn more about the new DXi central control satellite, **contact Jeff Joedicke [jjoedicke@grasslandcorp.com](mailto:jjoedicke@grasslandcorp.com).**



## Turbine Drive Traveling Sprinklers

The MR43 is one of our most popular machines and meets a variety of irrigation needs including single pass coverage on football fields, large riding arenas, small acreage irrigation, and much more! Built with a three wheel chassis design and integrated stabilizer hitch, the MR43 has a flow range from 15 to 60 gallons per minute and a 393 foot hose length. The MR43 can effectively water up to 1.5 acres in a single pull! The ability to add the reliable on board Honda boost pump kit with auxiliary large capacity fuel tank for longer run times, can greatly enhance performance in low-pressure situations.



### STANDARD FEATURES

- Three Wheel Chassis Design for Easy Towing
- Turbine Operated
- Automatic Retraction & Shutdown
- Speed Control for Desired Application Rates
- Pressure Gauge to Determine Inlet Pressure
- Supply Hose (2" x 20')
- Scrolled Level-Wind to Facilitate Correct Tube Wrapping
- Tube Mis-Wrap Safety
- Two Wheel, Galvanized Sprinkler Cart w/ Part Circle Sprinkler
- Sprinkler Cart Bracket for Transporting

### OPTIONS

- 5.5 HP Boost Pump Kit, Pull or Electric Start
- 5.5 HP Supply Pump Kit, Pull Start
- High Cart for Clearance in Taller Crops
- High Speed Gearing for Arena or Artificial Turf Applications

### ALL NEW 4520 LOADER & TOOLS

#### KM500 LOADER

The Ventrac KM500 Loader has arrived, adding enhanced versatility for the landscape, hardscape, site work, and tree care industries. With easy operation and effortless installation, the KM500 Loader on the Ventrac 4520 is a dream combination that maximizes the capability of the tractor while serving as a loader and material mover. When combined with a dual-wheeled tractor, it becomes the most turf-friendly loader in the industry, allowing you to move quickly across turf without tracking the ground.

#### PRODUCT BENEFITS

- Light Footprint
- Maneuverability
- Versatility
- Shuttle Fast
- Ease of Operation



#### KM100 ROCK BUCKET w/ GRAPPLE

The Rock Bucket with Grapple has a versatile layout to transport anything from whole logs to loose debris. It will sift large rocks from dirt and surrounding material. The independent top grapples effectively trap odd-shaped materials, grasping the load with multiple clamping points for transport. The open structure offers excellent visibility of the bucket's contents. The Rock Bucket is great for removing rocks during new lawn installations, moving debris into a dump trailer, or shuttling material across complex properties.



#### KM300 LOG GRAPPLE

The Log Grapple is a highly maneuverable way to transport whole logs. This time-saving capability means less log-cutting and fewer trips in and out of a work area. The log grapple allows users to place logs directly into a chipper or the back of a dump trailer with ease. In addition, the Log Grapple on the Ventrac Loader can secure whole logs, clusters of large branches, and material sized for the wood chipper, further speeding up tree work and job site clean-ups.

#### KM560 LIGHT MATERIAL BUCKET

The Light Material Bucket is the highest capacity bucket in the Ventrac attachment line-up. Its 1/2 yard size allows for reduced trips, saving time and fuel consumption when hauling light materials. In addition, this bucket is a time-saver for mulch installs and moving, spreading, and leveling any loose materials. Find a multitude of jobs for this bucket by the scoopful from mulch, wood shavings, sawdust, animal bedding, yard waste, compost, and more.



## NEW VENTRAC 4520 ATTACHMENTS

### DC520 SOIL CULTIVATOR

The DC520 Soil Cultivator prepares bare soil by cultivating a soft and uniform seedbed for the best possible direct-seeding results. This attachment works well to recondition hard, compacted soil into a better surface for more successful and consistent germination rates.

The Soil Cultivator consists of 4 main components that work simultaneously to process high volumes of soil and provide the ultimate seedbed. Cultivator Tines start by pulverizing the soil and separating the debris. Next, the Separator Tines sift and bury rock and other large debris below the prep surface. Next, the Distribution Blade carries the sifted soil and distributes it evenly across the working surface. And the Perforated Roller creates a pocketed surface for seed and presses small debris below grade.



#### PRODUCT BENEFITS

- **Hydraulic Height Adjust for Drum** - The KG540 Power Rake utilizes the front dual auxiliary hydraulic kit to allow for Quick Hydraulic Height Adjust for the drum.
- **Removable Pivoting Front Axle** - Optional removal of the axle provides the ability to work up closer to structures.
- **Front Mounted** - The Ventrac utilizes out-front design with attachments for better visibility.
- **Prepare New Lawn Installation** - Remove surface rocks and debris, creating a level, prepped finish for seeding.
- **Renovate Driveways** - Refresh a gravel driveway by bringing old gravel back to the surface for a fresh gravel finish.
- **Finger Tip Rotor Control** - The rotor speed, angle, depth & direction can all be adjusted on the go with the control levers.

### EG520 PRIMARY SEEDER

The EG520 Primary Seeder plants grass seed directly into bare soil with a consistent and accurate drop rate for perfect seed placement. With precise application adjustment and a removable calibration tray, easy adjustment for different grass seed types is possible.

The Primary Seeder features five main components for improved direct-seeding capability. The Calibration Tray is a built-in tray that catches material during the calibration process. The Front Packer Roller crushes the material to provide a smooth surface for the seed to drop. The Rear Packer Roller is an offset roller that places a fine layer of dirt over the seed. The Seed Box has a five cubic feet capacity, allowing you to carry large amounts of seed for efficiency. And the Precision Seed Funnels meter an accurate flow of a variety of turf seeds. This ground-driven application is consistent at variable speeds, and the offset cultipacker discs are designed to create optimal seed-to-soil contact. And the five cubic feet of hopper capacity keeps you going the distance, experiencing the efficiency you've come to expect from Ventrac attachments.



#### PRODUCT BENEFITS

- **CALIBRATION TRAY** - Built in tray allows you to catch material during calibration process
- **FRONT PACKER ROLLER** - Crush material and provide a smooth surface for seed to drop
- **REAR PACKER ROLLER** - Offset roller places a fine layer of dirt over seed
- **SEED BOX** - 5 cubic feet box allows you to carry large amounts of seed
- **PRECISION SEED FUNNELS** - Meter accurate flow of a variety of turf seed

### THE NEXT GENERATION OF SIDEWALK SNOW VEHICLE IS HERE

#### SSV 2120M

The Ventrac SSV is your one-pass snow removal and de-icing machine, engineered to be a system that can handle any winter storm. The Sidewalk Snow Vehicle is a refined and durable option for those zero-tolerance accounts, making it easy to manage snow and ice on sidewalks when you need it most.

The SSV allows for further reduction of hand labor and walk-behind equipment than ever before. With stand-on 4x4 skid steer operation, the SSV has a 36" working width that allows you to travel miles of sidewalk in a fraction of the time, furthering the reduction of hand labor and walk-behind equipment. With a full line-up of commercial quality snow removal attachments and de-icing options, the SSV is sure to be a game-changer for you this winter season.

#### NEW FEATURES

- **Operator Comfort** - Newly added dual-zone heated hand grips, intuitive controls, and suspended platform
- **More Power, Better Cooling** - 23 hp 627cc Vanguard engine

The Ventrac SSV is setting the standard for sidewalk snow management. With multiple attachments, and a 34" machine width, the SSV is ready to access the tightest areas of any property, making sidewalk snow management easy and efficient!



### NEW VENTRAC ACCESSORY

#### TOOLBOX KIT

With the lack of storage on the redesigned 4520 due to additional hydraulic components, Ventrac has the solution. Introducing 2 new toolbox options, a large and small plastic box with mounting hardware. Both mount to the ROPS, the small version mounts to the right side of the tractor above the SDLA lever, and the large version mounts behind the operator seat.

**70.4184 KIT, TOOLBOX SMALL**

**70.4185 KIT, TOOLBOX LARGE**





**BROOKHAVEN GOLF COURSE**

Mr. Geoffrey Leather's package is now complete, a Toro Greensmaster 3150, Reelmaster 3555-D, and a Groundsmaster 4300-D. He's looking forward to the 2023 growing season! Thank you Brookhaven Golf Course.



**JOHN BOYD THACHER STATE PARK**

John Boyd Thacher State Park got their new Groundsmaster 4000 today. Thanks Brian, Carley and Bill!



**SARATOGA GOLF & POLO CLUB**

Saratoga Golf & Polo Club is electrified by their new Lithium eFlex 21s! Whisper quiet for early morning mowing.



**TOWN OF JOHNSBURG**

The Town of Johnsburg got their new SSV with v-blade and drop spreader. No more hand shoveling sidewalks...



**NYS PARKS IN SARATOGA**

A 6-pack of Toro Workman Lithium GTXs for NYS Parks in Saratoga. Thank you Brian!



**ALBANY COUNTRY CLUB**

Albany Country Club can now do some major work with minor turf disruption in their new Toro Outcross 9060!



**TOWN OF NISKAYUNA**

A couple of new Z Master 6000 mowers for the Town of Niskayuna. Thanks Ken!

Grassland Equipment & Irrigation Corp.  
892 Troy Schenectady Road  
Latham, New York 12110  
Phone: 518-785-5841  
Fax: 518-785-5740  
www.grasslandcorp.com



PRESORT STD.  
US POSTAGE  
PAID  
ALBANY, N.Y.  
PERMIT # 1097

**Visit [Grasslandcorp.com](http://Grasslandcorp.com) to see our full selection of New and Pre-owned Equipment**

Grassland has a great selection of Pre-Owned Toro equipment for turf professionals on a budget. These units can be offered with a factory supported warranty and financing is available. Selection varies and changes over time. If you are in the market for quality Pre-Owned equipment, contact your Grassland representative. Even if we do not have what you are looking for, we may be able to locate a unit to meet your needs. Why purchase from a third party broker when you can buy quality equipment from people who can offer you a Toro Factory Warranty and outstanding local service and parts support.



**Aerators**



**Bunker Rakes/Infield Pro**



**Debris Equipment**



**Greens Mowers**



**Reel Mowers**



**Rotary Mowers**



**Site Works Equipment**



**Snow Removal**



**Sprayers**



**Specialty**



**Top Dressers/Seeders**



**Utility Vehicles**